



GRUPPO **FOX**

campionario rivestimenti

upholstery pattern book





summary

CAT. E

- 01 BOUCLE' pag. 4
- 02 TEX / NAVAJOS / BOGART pag. 6
- 03 TEX / NAVAJOS / BOGART pag. 8
- 04 HARRISON pag. 10
- 05 DUKE pag. 11
- 06 PASTELLO / JOKER pag. 14

CAT. G

- 07 X355 VELU' pag. 18
- 08 MARLINO pag. 21
- 09 AMIGO pag. 24
- 10 4.8047 pag. 26
- 11 SUEDE pag. 28

CAT. M

- 12 JUNIOR pag. 30
- 13 KAMUT pag. 32
- 14 BRERA pag. 34
- 15 CORVARA pag. 35
- 16 2882 pag. 36
- 17 TEDDY pag. 37
- 18 VENETO pag. 39
- 19 PLANET pag. 41
- 20 BEIN pag. 43

CAT. SPECIAL

- 21 PRINCIPE pag. 44
- 22 GEMMA PLUS pag. 47
- 23 DOWNTOWN pag. 49
- 24 MAORI pag. 50
- 25 RIKK 5231 pag. 51
- 26 SHINE pag. 52

CAT. EXTRA

- 27 LA THUILE pag. 54
- 28 THOMAS pag. 55

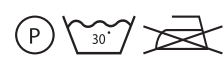
CAT. PELLE

- P LA PELLE 4000 pag. 56
- P LA PELLE 5000 pag. 58
- S SAVANA pag. 60
- N NABUK pag. 61

01

ART: BOUCLE'
 CAT: E
 COMP: 100% POLIESTERE
 PESO: 480 gr/mtl

MARTINDALE: 50.000 giri
 ALTEZZA: 140 cm
 PILLING: 4/5
 Idrorepellente / Ignifugo BS5852



COL. 04



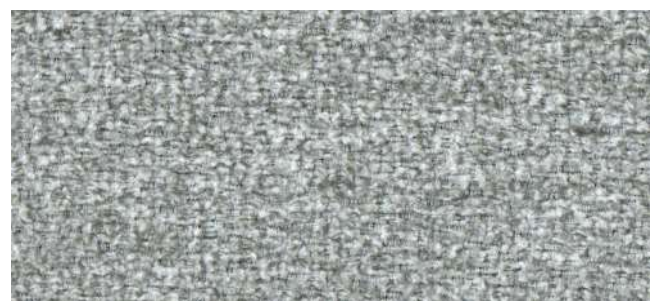
COL. 35



COL. 74



COL. 57



COL. 06



COL. 18



COL. 39



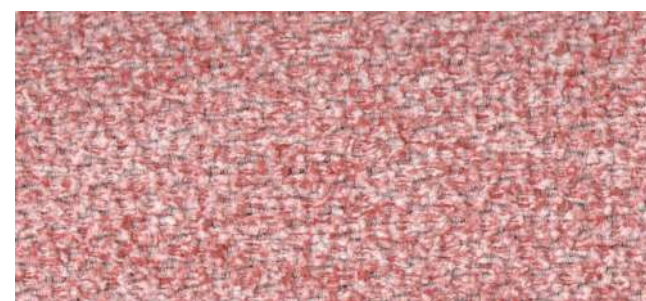
COL. 37



COL. 16



COL. 03



COL. 13



COL. 67



COL. 26



COL. 79



COL. 33



COL. 36



COL. 34



COL. 17



COL. 53



COL. 56

02

ART: TEX
 CAT: E
 COMP: 100% PL
 PESO: 720 gr/mtl

MARTINDALE: 40.000 giri
 PILLING: 4/5
 ALTEZZA: 140 cm




ART: NAVAJOS
 CAT: E
 COMP: 100% PL
 PESO: 750 gr/mtl

MARTINDALE: 32.000 giri
 PILLING: 4
 ALTEZZA: 140 cm



ART: BOGART
 CAT: E
 COMP: 73%PES 27%AC
 PESO: 700 gr/mtl

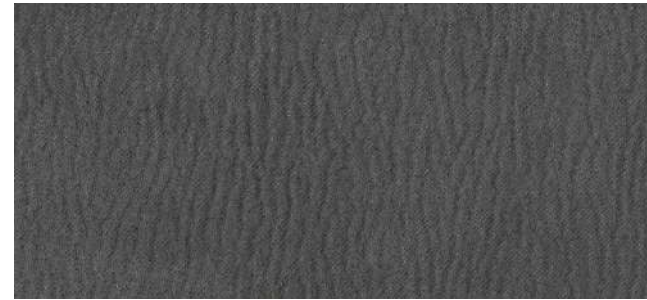
MARTINDALE: 100.000 giri
 PILLING: 4
 ALTEZZA: 140 cm




TEX COL. 3



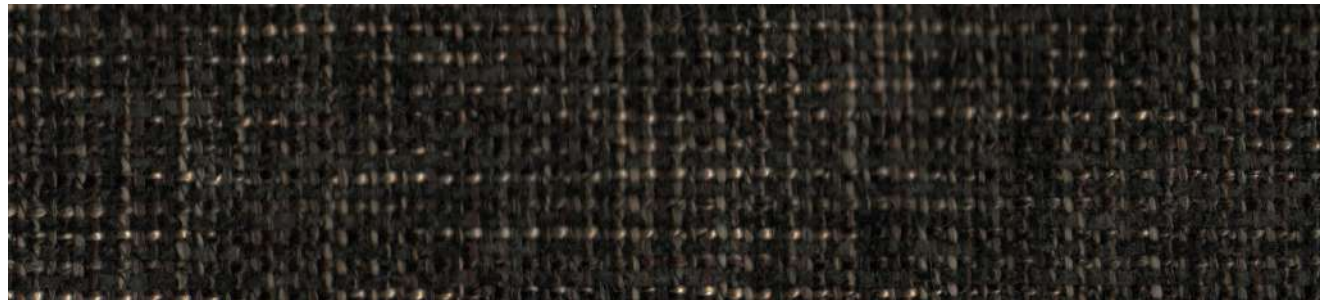
NAVAJOS COL. 8



TEX COL. 7



NAVAJOS COL. 7



BOGART COL. 05



BOGART COL. 8



TEX COL. 6



NAVAJOS COL. 2



BOGART COL. 07

03

ART: TEX
 CAT: E
 COMP: 100% PL
 PESO: 720 gr/mtl

MARTINDALE: 40.000 giri
 PILLING: 4/5
 ALTEZZA: 140 cm



ART: NAVAJOS
 CAT: E
 COMP: 100% PL
 PESO: 750 gr/mtl

MARTINDALE: 32.000 giri
 PILLING: 4
 ALTEZZA: 140 cm



ART: BOGART
 CAT: E
 COMP: 73%PES 27%AC
 PESO: 700 gr/mtl

MARTINDALE: 100.000 giri
 PILLING: 4
 ALTEZZA: 140 cm



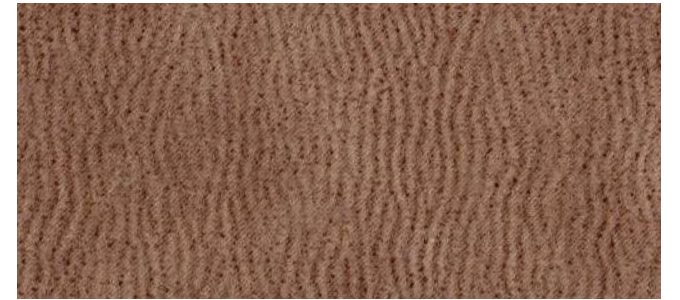

TEX COL. 1



NAVAJOS COL. 3



TEX COL. 4



NAVAJOS COL. 4



BOGART COL. 01



BOGART COL. 03



TEX COL. 2



NAVAJOS COL. 5



TEX COL. 5



NAVAJOS COL. 6



BOGART COL. 02



BOGART COL. 04

04

ART: HARRISON
 CAT: E
 COMP: 90% PL 10% CO
 PESO: 980 gr/mtl

MARTINDALE: 90.000 giri
 PILLING: 4/5
 ALTEZZA: 140 cm



05

ART: DUKE
 CAT: E
 COMP: 100%PL
 PESO: 350 gr/mtl

MARTINDALE: >100.000 giri
 ALTEZZA: 140 cm
 IDROREPELENTE



HARRISON COL. 01



HARRISON COL. 02



HARRISON COL. 05



HARRISON COL. 03



HARRISON COL. 06



HARRISON COL. 12



COL. 01



COL. 69



COL. 14



COL. 99



COL. 24



COL. 89



COL. 34



COL. 73



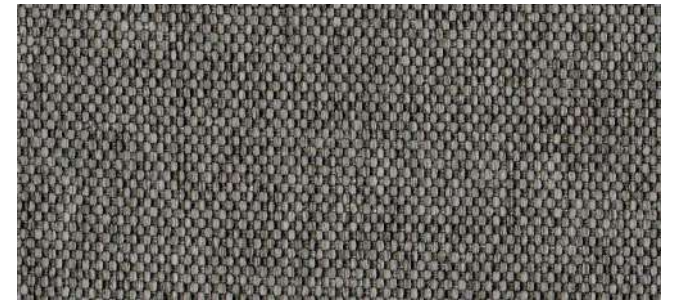
COL. 74



COL. 79



COL. 38



COL. 36



COL. 39



COL. 57



COL. 48



COL. 56



COL. 33



COL. 37



COL. 15



COL. 06



COL. 25



COL. 26

06

ART: PASTELLO
 CAT: E
 COMP: 86%PL 15%VI
 PESO: 700 gr/mtl

MARTINDALE: 50.000 giri
 PILLING: 3/4
 ALTEZZA: 140 cm



ART: JOKER
 CAT: E
 COMP: 100% PES
 PESO: 650 gr/mtl

MARTINDALE: >45.000 giri
 PILLING: 4/5
 ALTEZZA: 140 cm



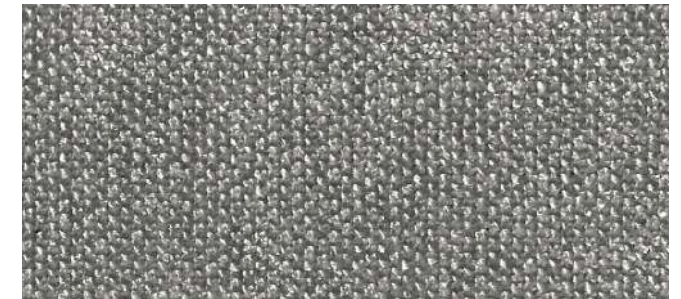
PASTELLO COL. 01



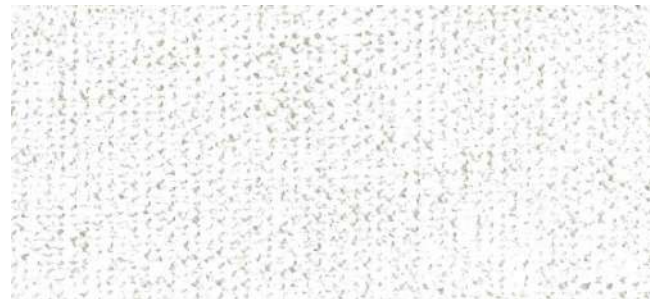
PASTELLO COL. 19



PASTELLO COL. 16



PASTELLO COL. 06



PASTELLO COL. 02



PASTELLO COL. 22



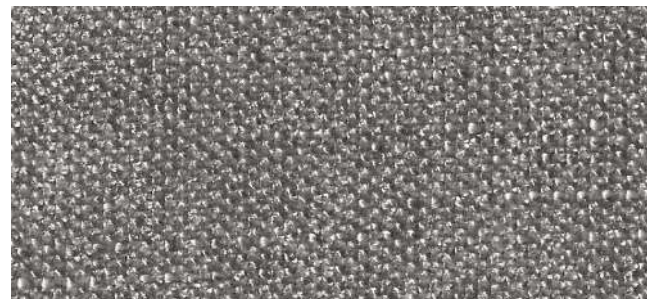
PASTELLO COL. 10



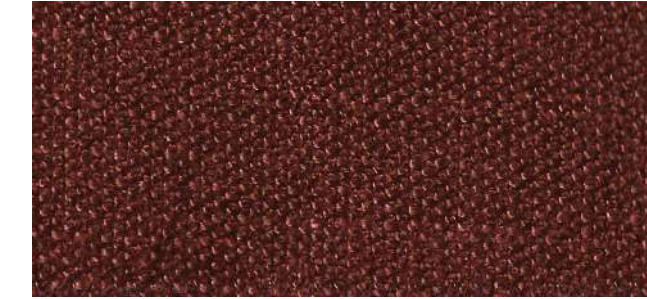
PASTELLO COL. 11



PASTELLO COL. 03



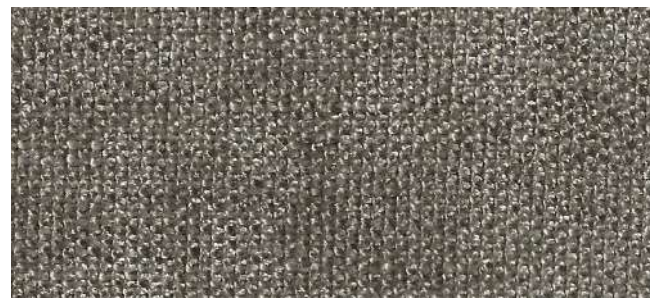
PASTELLO COL. 25



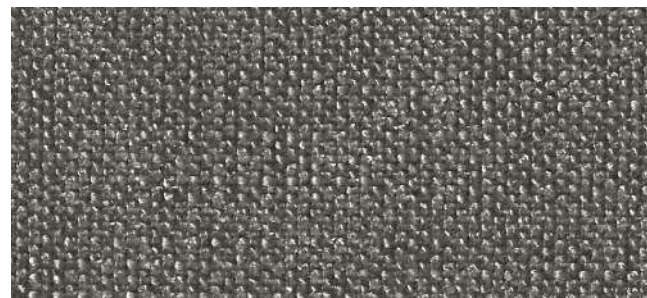
PASTELLO COL. 20



PASTELLO COL. 23



PASTELLO COL. 08



PASTELLO COL. 17



PASTELLO COL. 09



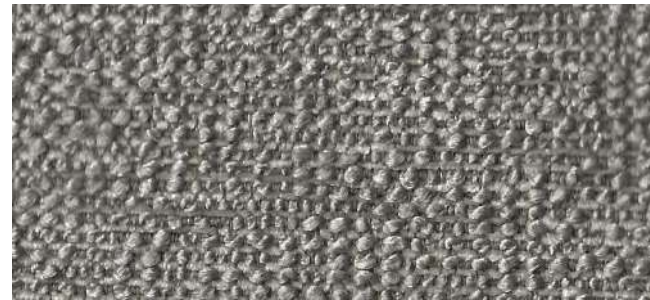
PASTELLO COL. 12



JOKER COL. 01



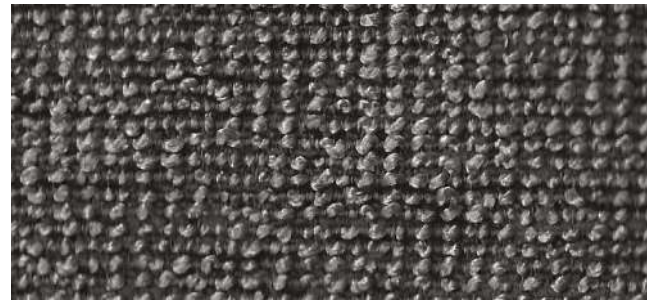
PASTELLO COL. 18



JOKER COL. 03



JOKER COL. 02



JOKER COL. 06



JOKER COL. 04



JOKER COL. 07



JOKER COL. 05

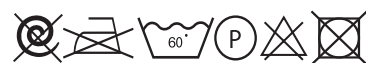


JOKER COL. 08

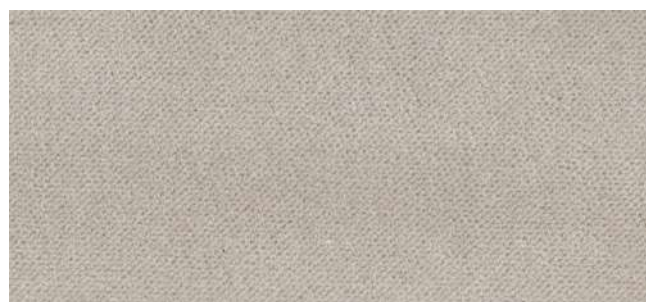
07

ART: X 355 VELU'
 CAT: G
 COMP: 100%PL
 PESO: 680 gr/mtl

MARTINDALE: 50.000 giri
 ALTEZZA: 140 cm
 PILLING: 4/5



COL. 02



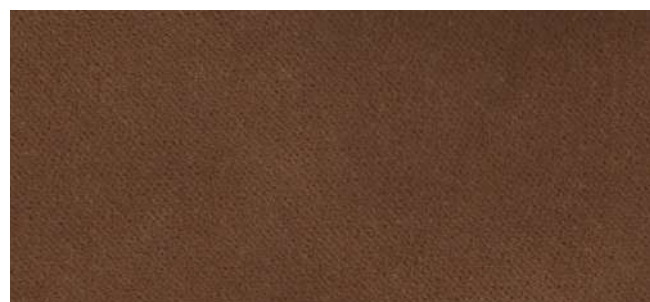
COL. 11



COL. 08



COL. 12



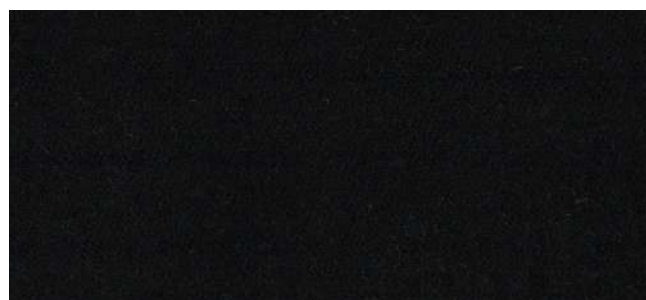
COL. 05



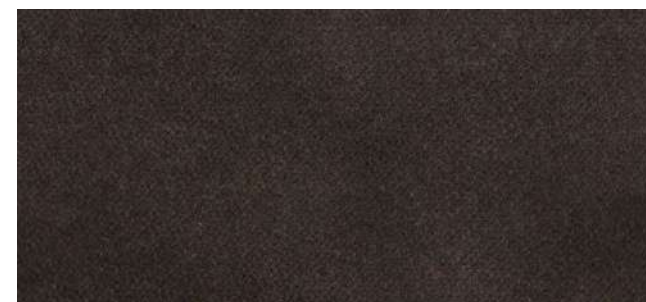
COL. 13



COL. 07



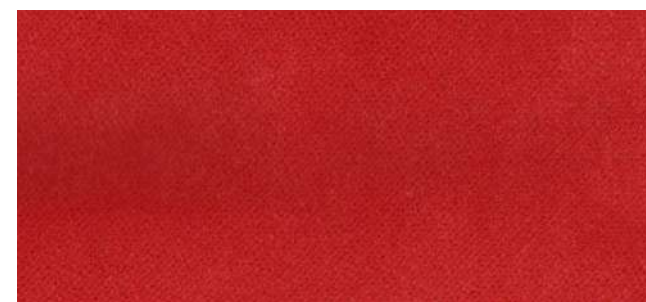
COL. 14



COL. 06



COL. 39



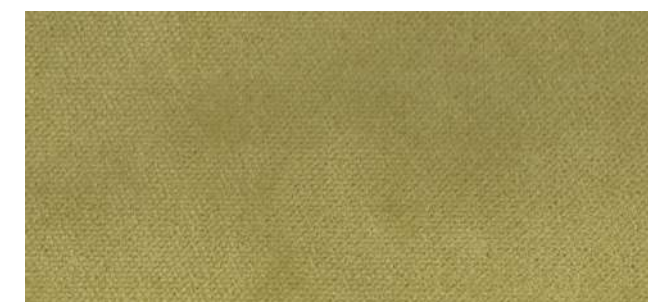
COL. 20



COL. 37



COL. 19



COL. 36



COL. 22



COL. 32



COL. 15



COL. 29

08

ART: MARLINO
 CAT: G
 COMP: 100% COTONE
 PESO: 350 gr/mtl

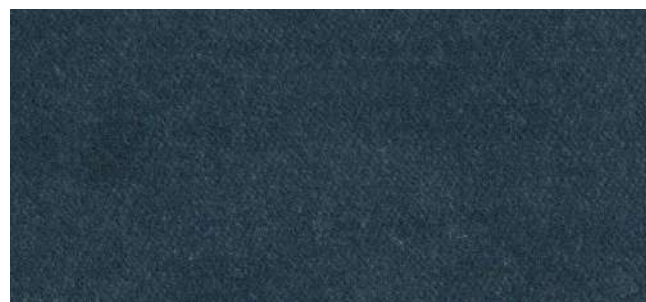
MARTINDALE: 25.000 giri
 ALTEZZA: 140 cm



IN PREVISIONE DI UN LAVAGGIO DOMESTICO AD ACQUA,
 SI CONSIGLIA DI EFFETTUARE IL TRATTAMENTO DI PRELAVAGGIO
 BEFORE A DOMESTIC WATER WASHING,
 IT IS RECOMMENDED TO CARRY OUT THE PRE-WASH TREATMENT



COL. 23



COL. 27



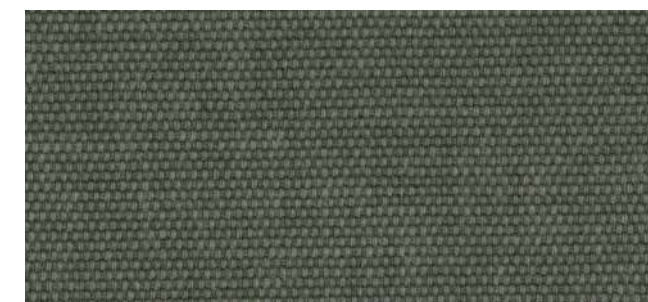
COL. 25



COL. 26



COL. 2655



COL. 2666



COL. 2651



COL. 2667



COL. 2652



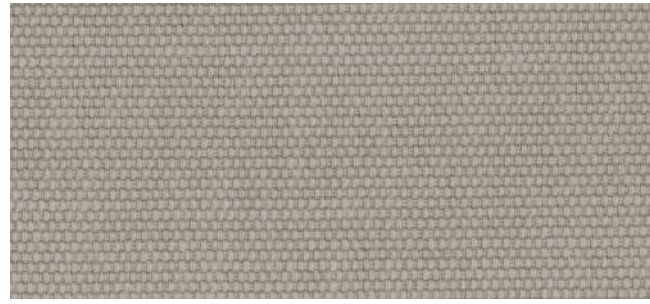
COL. 2663



COL. 2654



COL. 2664



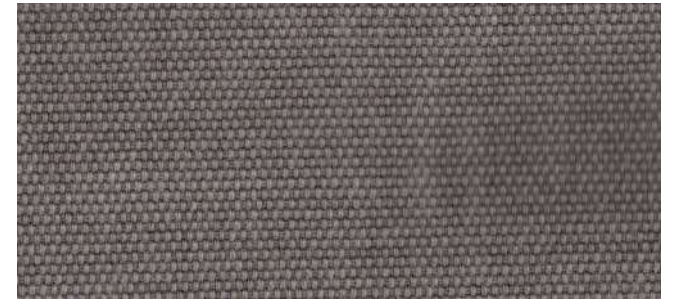
COL. 2650



COL. 2661



COL. 2670



COL. 2657



COL. 2656



COL. 2662



COL. 2671



COL. 2673



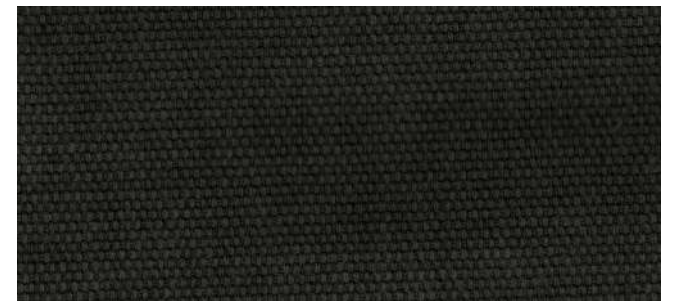
COL. 2672



COL. 2653



COL. 2665



COL. 2660



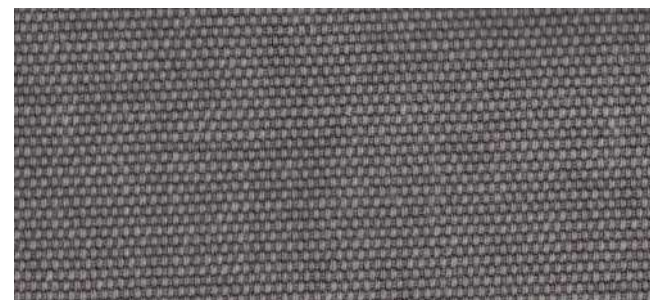
COL. 2668



COL. 2659



COL. 2669



COL. 2658

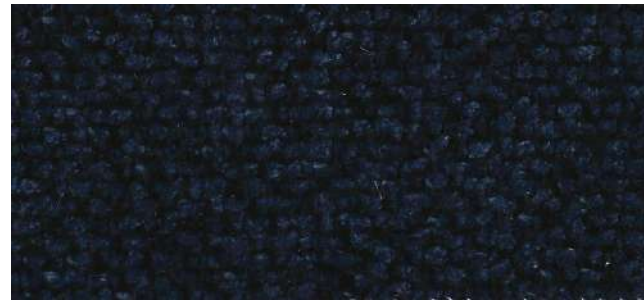
09

ART: AMIGO
 CAT: G
 COMP: 100% PL
 PESO: 795 gr/mtl

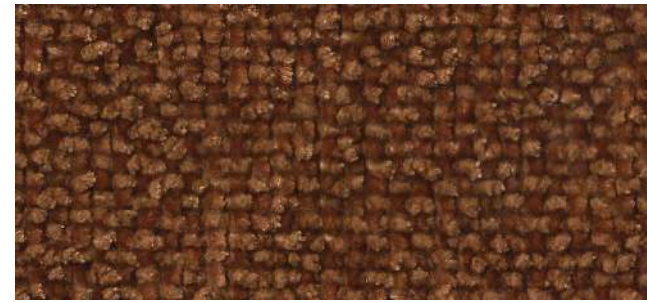
MARTINDALE: 40.000 giri
 ALTEZZA: 138 cm
 PILLING: 4



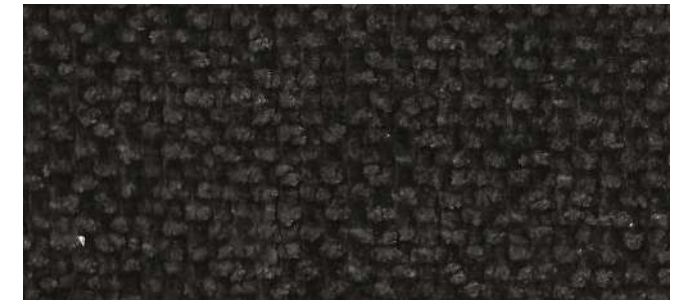
COL. 01



COL. 14



COL. 09



COL. 19



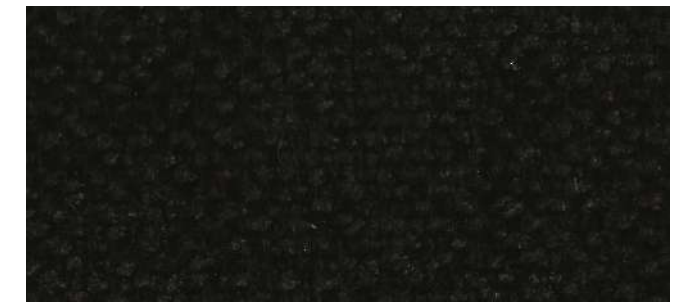
COL. 02



COL. 15



COL. 12



COL. 20



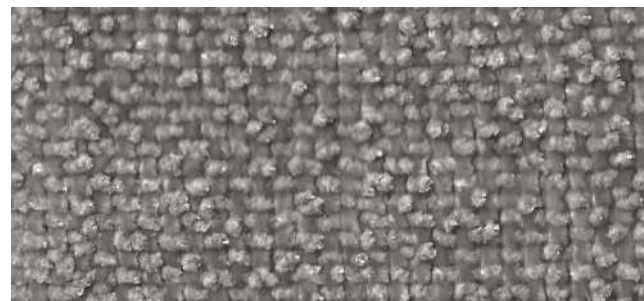
COL. 04



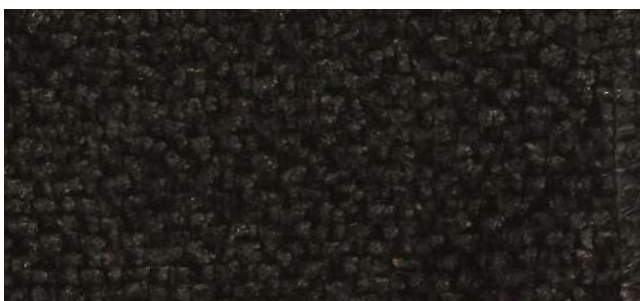
COL. 16



COL. 06



COL. 17



COL. 07



COL. 18

10

ART: 4.8047
 CAT: G
 COMP: 100% PL
 PESO: 420 gr/mtl

MARTINDALE: 100.000 giri
 ALTEZZA: 140 cm



IRRESTRINGIBILE ANTIMACCHIA



COL. 01



COL. 23



COL. 03



COL. 20



COL. 04



COL. 19



COL. 34



COL. 15



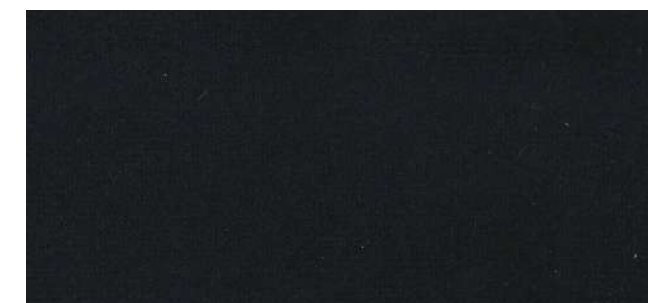
COL. 06



COL. 14



COL. 07



COL. 13



COL. 26



COL. 10



COL. 44



COL. 08



COL. 31



COL. 12

11

ART: SUEDE
 CAT: G
 COMP: 100% PL
 PESO: 630 gr/mtl

MARTINDALE: 40.000 giri
 ALTEZZA: 140 cm
 IDROREPELENTE
 PILLING: 4



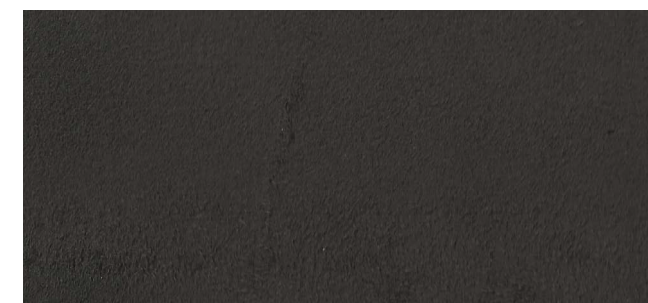
COL. 01



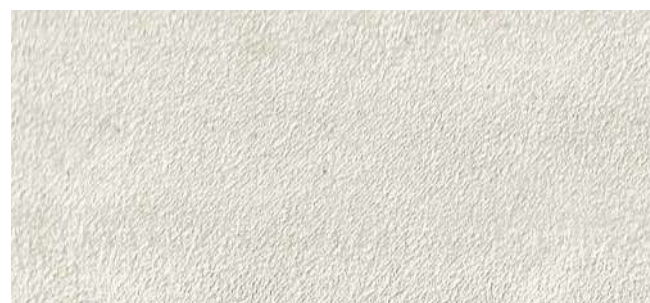
COL. 29



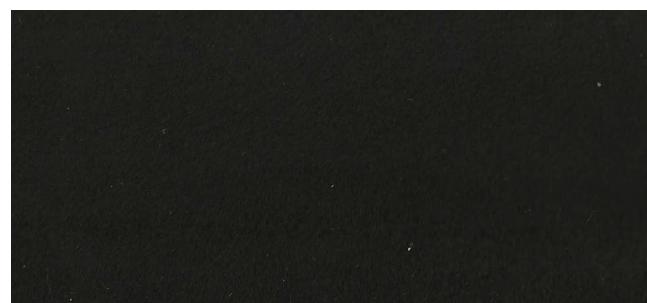
COL. 48



COL. 66



COL. 04



COL. 67



COL. 124



COL. 02



COL. 34



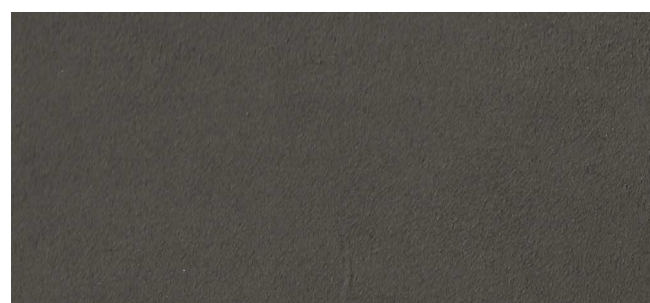
COL. 68



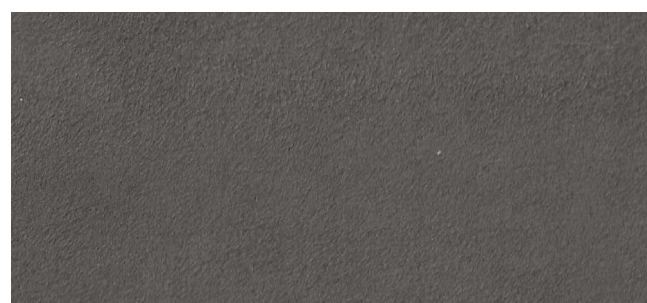
COL. 54



COL. 06



COL. 74



COL. 56

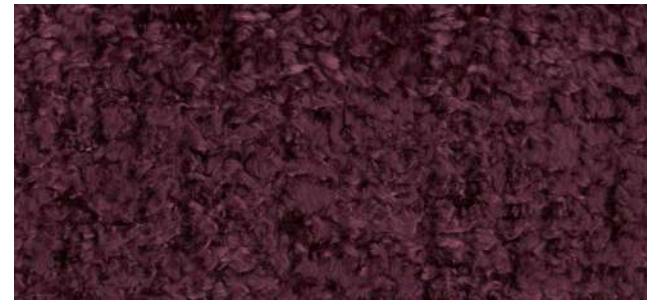
12

ART: JUNIOR
 CAT: M
 COMP: 70%PC 30%PL
 PESO: 750 gr/mtl

MARTINDALE: >40.000 giri
 ALTEZZA: 140 cm
 PILLING: 4



COL. 01



COL. 09



COL. 06



COL. 14



COL. 02



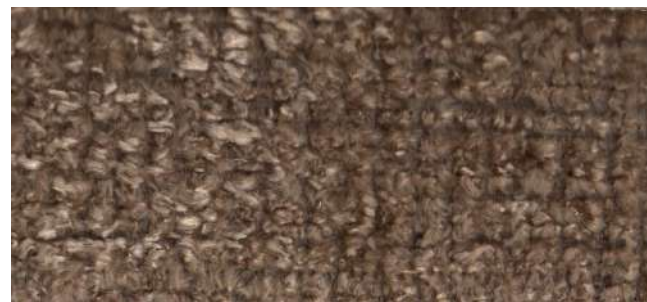
COL. 10



COL. 08



COL. 15



COL. 03



COL. 11



COL. 07



COL. 16



COL. 04



COL. 12



COL. 05



COL. 13

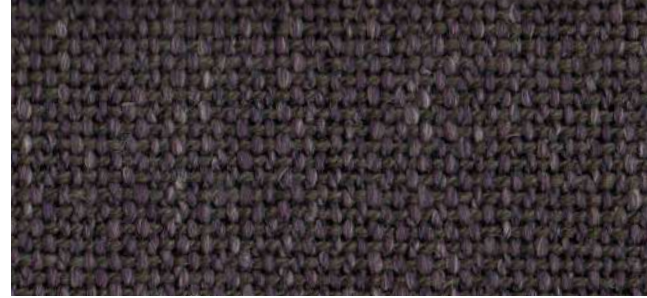
13

ART: KAMUT
 CAT: M
 COMP: 38%CO 31%PC 14%PL 9%LI 8%VI
 PESO: 820 gr/mtl

MARTINDALE: >30.000 giri
 ALTEZZA: 145 cm
 PILLING: 4



COL. 5



COL. 14



COL. 12



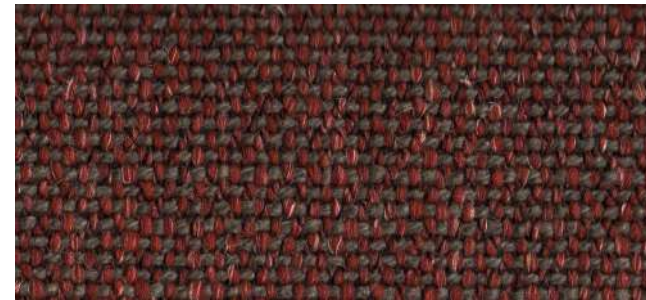
COL. 2



COL. 6



COL. 16



COL. 10



COL. 1



COL. 7



COL. 15



COL. 8



COL. 4



COL. 9

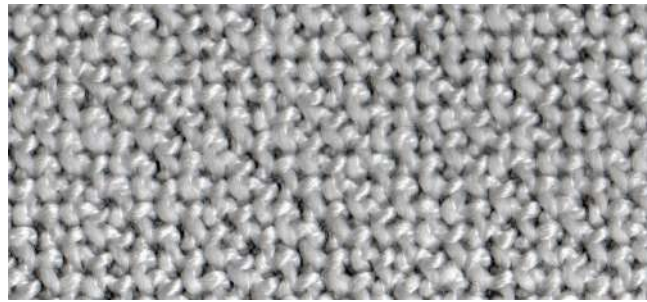


COL. 3

14

ART: BRERA
 CAT: M
 COMP: 59%PC 26%CO 10%WO 5%PL
 PESO: 890 gr/mtl

MARTINDALE: >30.000 giri
 ALTEZZA: 140 cm
 PILLING: 3/4



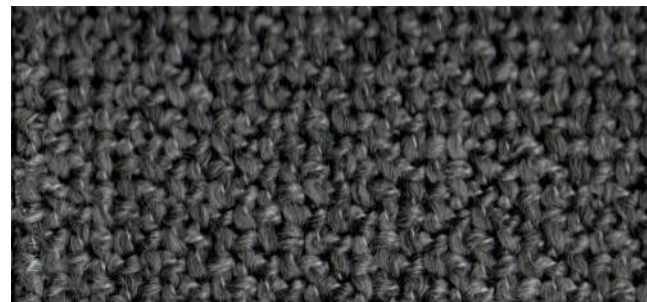
COL. 01



COL. 05



COL. 02



COL. 06



COL. 03



COL. 07



COL. 04



COL. 08



COL. 09

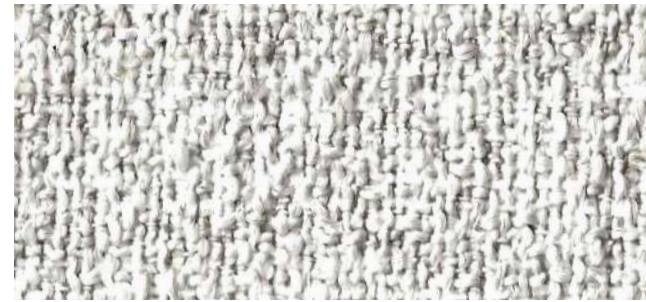


COL. 10

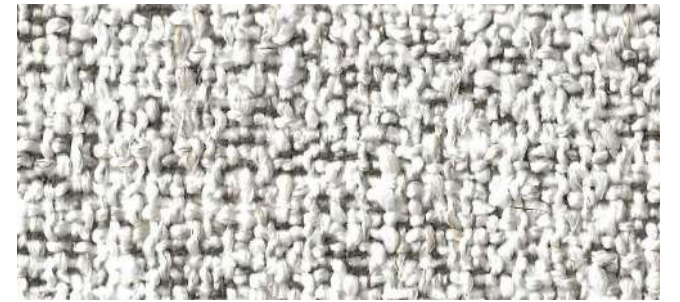
15

ART: CORVARA
 CAT: M
 COMP: 51%AC - 22%CO - 11%PL - 9%VI - 7%LI
 PESO: 750 gr/mtl

MARTINDALE: 50.000 giri
 ALTEZZA: 140 cm
 PILLING: 4



COL. 01



COL. 04



COL. 24



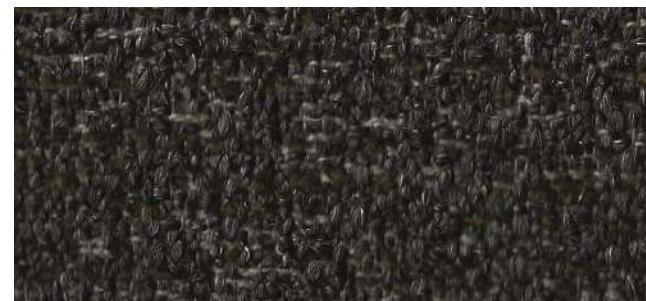
COL. 14



COL. 35



COL. 54



COL. 74



COL. 48



COL. 37

16

ART: 2882
 CAT: M
 COMP: 57%PC - 43%PES
 PESO: 601 gr/mtl

MARTINDALE: 110.000 giri
 ALTEZZA: 140 cm
 PILLING: 4/5



COL. 01



COL. 12



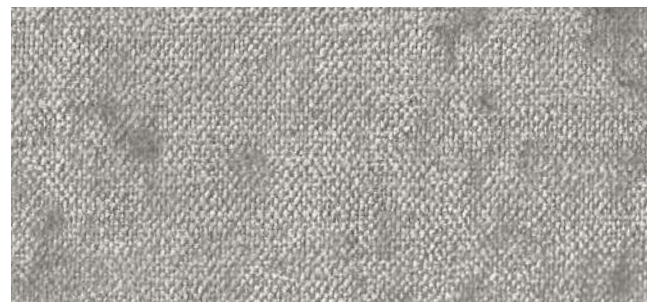
COL. 02



COL. 16



COL. 04



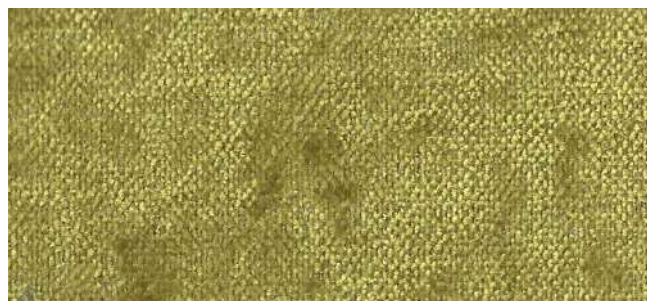
COL. 06



COL. 09



COL. 07



COL. 25



COL. 08

17

ART: TEDDY
 CAT: M
 COMP: 100% PL
 PESO: 740 gr/mtl

MARTINDALE: 40.000 giri
 ALTEZZA: 140 cm



COL. 96



COL. 11



COL. 19



COL. 12



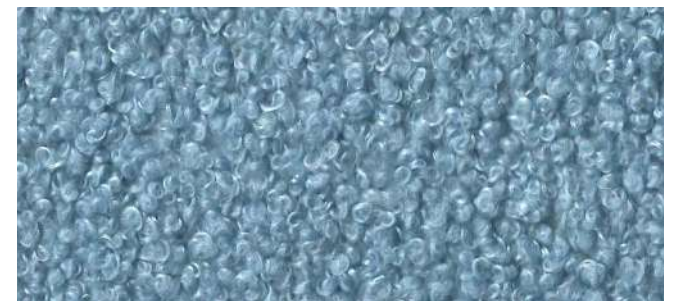
COL. 43



COL. 37



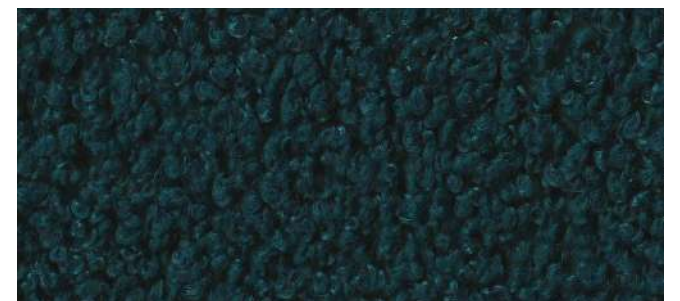
COL. 04



COL. 40



COL. 05

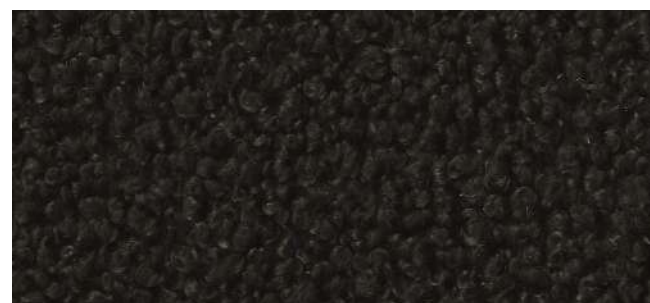


COL. 15

18

ART: VENETO
 CAT: M
 COMP: 100% POLIESTERE RICICLATO
 PESO: 481 gr/mtl

MARTINDALE: 35.000 giri
 ALTEZZA: 140 cm



COL. 09



COL. 16



COL. 56



COL. 407



COL. 07



COL. 17



COL. 51



COL. 53



COL. 08



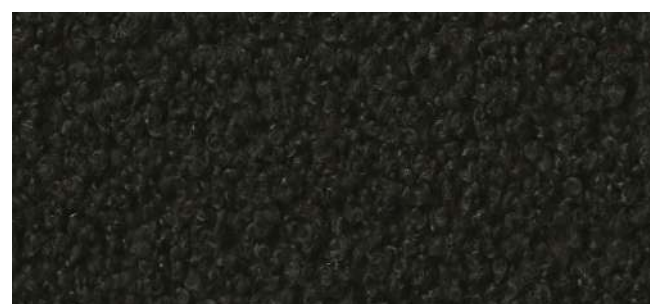
COL. 01



COL. 90



COL. 60



COL. 13



COL. 02



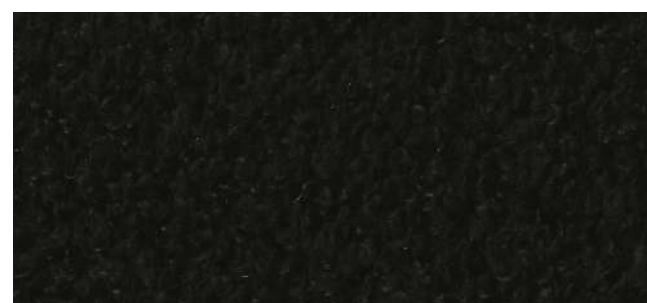
COL. 11



COL. 336



COL. 39



COL. 18



COL. 09



COL. 300


TESSUTO REALIZZATO CON FIBRE RICICLATE
 ECO-FRIENDLY
 RISPETTA L'AMBIENTE



COL. 27



COL. 271



COL. 324



COL. 93

19

ART: PLANET

CAT: M

COMP: 51%RICICLATO OLEFIN - 27%PL - 22%AC

PESO: 770 gr/mtl

MARTINDALE: 60.000 giri

ALTEZZA: 140 cm

PILLING: 4



COL. 06



COL. 25



COL. 24



COL. 48



COL. 34



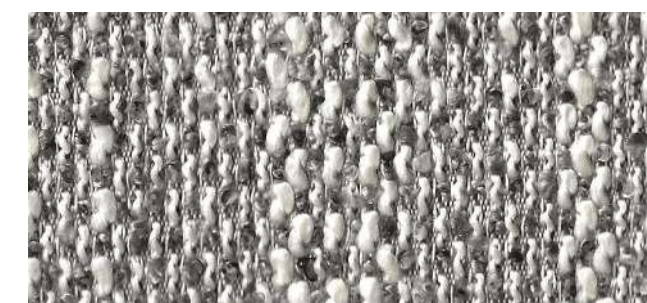
COL. 57



COL. 47



COL. 54



COL. 16


TESSUTO REALIZZATO CON FIBRE RICICLATE
 ECO-FRIENDLY
 RISPETTA L'AMBIENTE

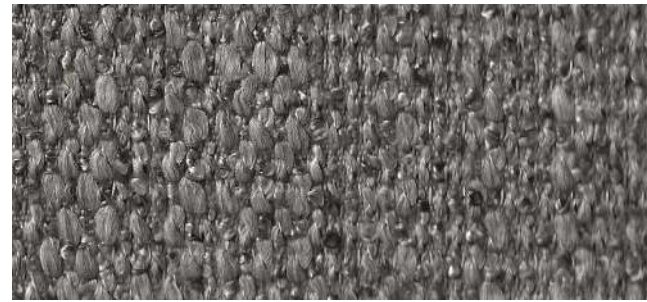
20

ART: BEIN
 CAT: M
 COMP: 49,5%PAC - 38,5%PES - 12%CO
 PESO: 522 gr/mtl

MARTINDALE: >35.000 giri
 ALTEZZA: 140 cm
 ANTIMACCHIA
 PILLING: 4/5



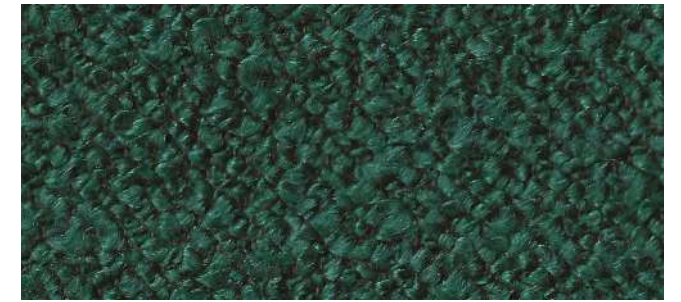

COL. 64



COL. 36



COL. 15



COL. 27



COL. 84



COL. 46



COL. 03



COL. 37



COL. 33



COL. 56



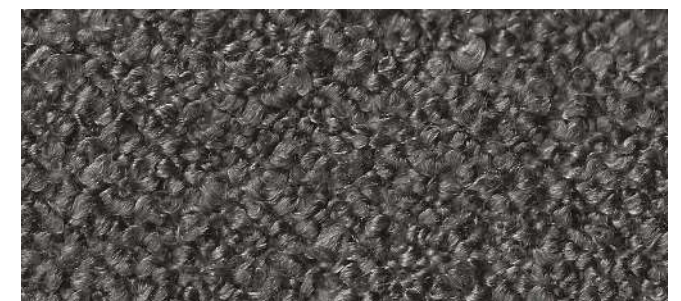
COL. 05



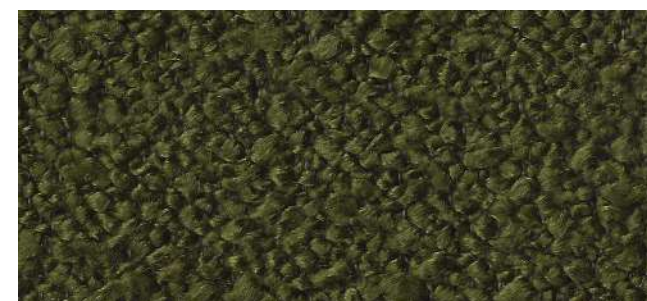
COL. 09



COL. 02



COL. 90



COL. 38



COL. 99

21

ART: PRINCIPE
 CAT: SPECIAL
 COMP: 100% LINO
 PESO: 650 gr/mtl

MARTINDALE: 25.000 giri
 ALTEZZA: 140 cm
 PILLING: 4



COL. 02



COL. 19



COL. 03



COL. 23



COL. 01



COL. 16



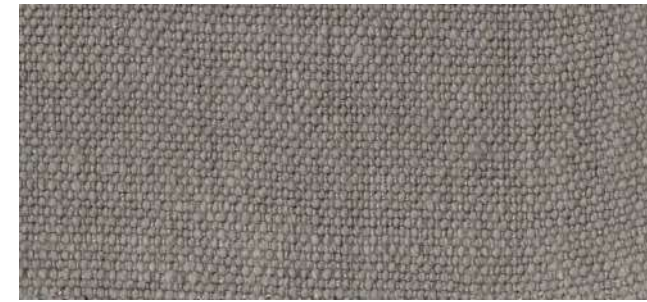
COL. 22



COL. 05



COL. 15



COL. 07



COL. 21



COL. 24



COL. 14



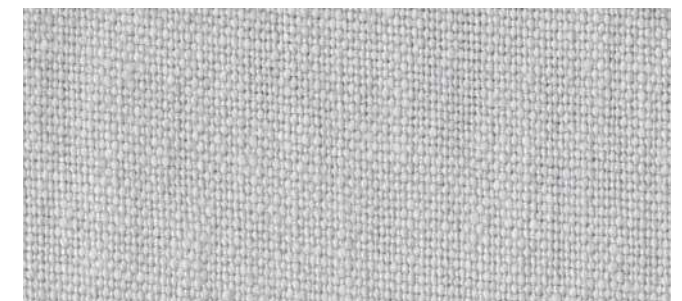
COL. 11



COL. 10



COL. 18



COL. 06



COL. 17



COL. 20

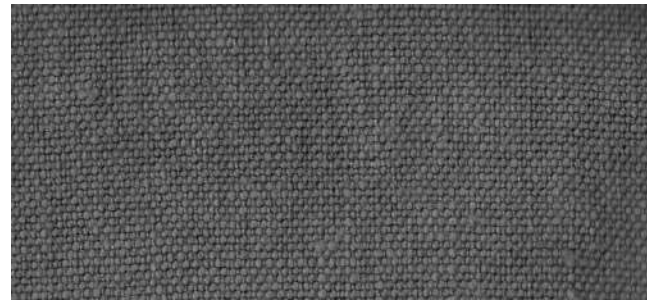
22

ART: GEMMA PLUS
 CAT: SPECIAL
 COMP: 40%VI 25%CO 23%PC 7%PL 5%AF
 PESO: 1001 gr/mtl

MARTINDALE: >30.000 giri
 ALTEZZA: 140 cm
 PILLING: 4/5



COL. 25



COL. 08



COL. 13



COL. 09



COL. 04



COL. 12



COL. 01



COL. 02/1



COL. 02/2



COL. 03/1



COL. 09/1



COL. 96/2



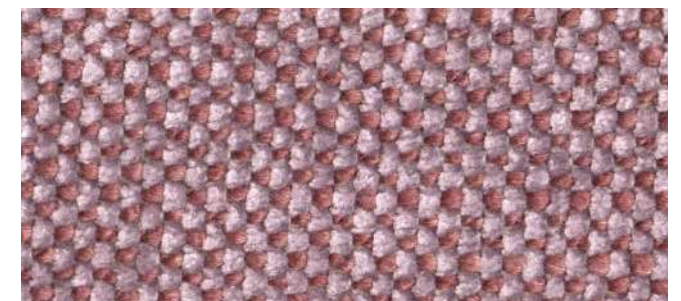
COL. 10/01



COL. 30/02



COL. 30/01

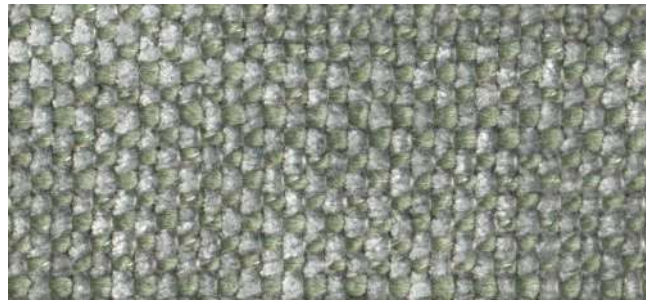


COL. 66/01

23

ART: DOWNTOWN
 CAT: SPECIAL
 COMP: 71%PL - 12%VI - 11%PC - 6%LI
 PESO: 900 gr/mtl

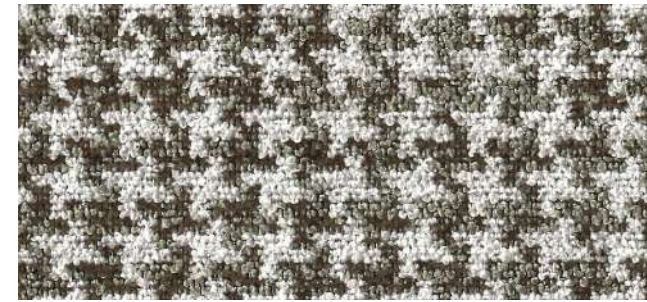
MARTINDALE: 25.000 giri
 ALTEZZA: 140 cm
 PILLING: 4



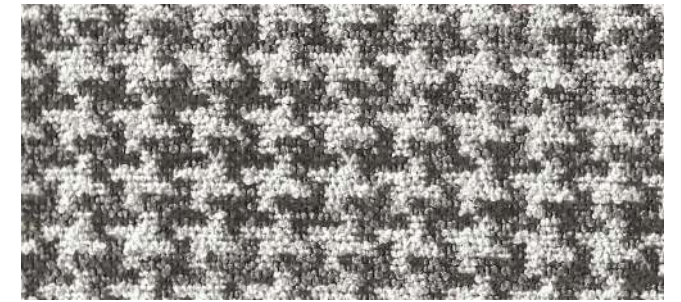
COL. 90/02



COL. 90/03



COL. 01



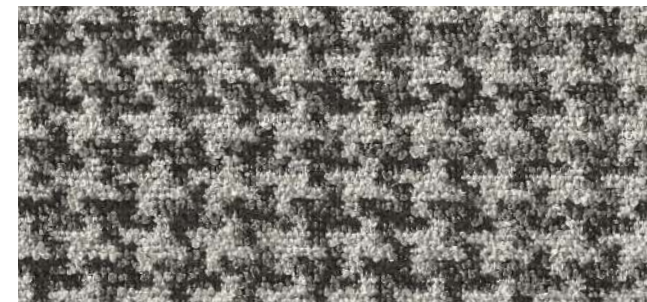
COL. 02



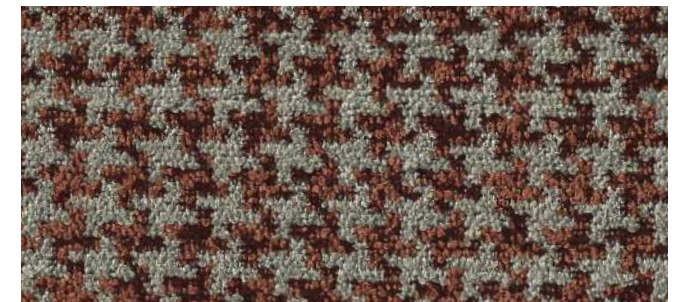
COL. 76/02



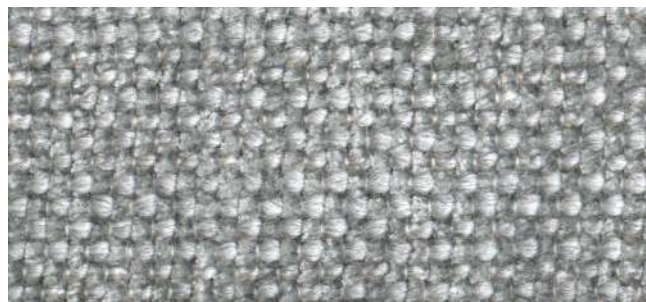
COL. 74/01



COL. 03



COL. 04



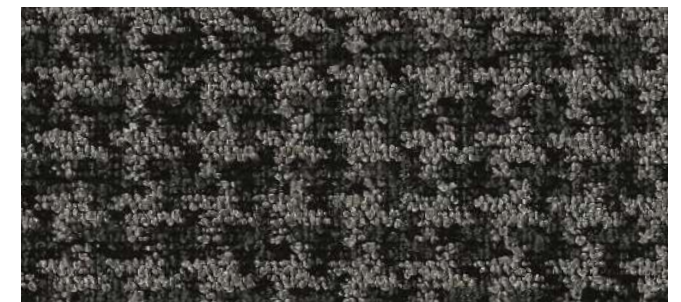
COL. 90/01



COL. 96/03



COL. 05



COL. 06



COL. 96/01



COL. 98/01

24

ART: MAORI
 CAT: SPECIAL
 COMP: 58% PC - 20%WO - 18%PL - 4%CO
 PESO: 840/850 gr/mtl

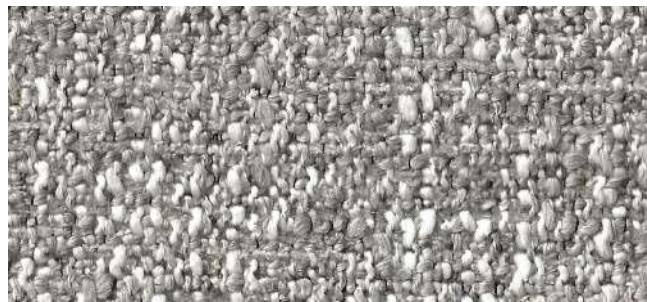
MARTINDALE: 28.000 giri
 ALTEZZA: 140 cm
 PILLING: 3/4



COL. 01



COL. 09



COL. 16



COL. 17



COL. 12



COL. 06



COL. 08

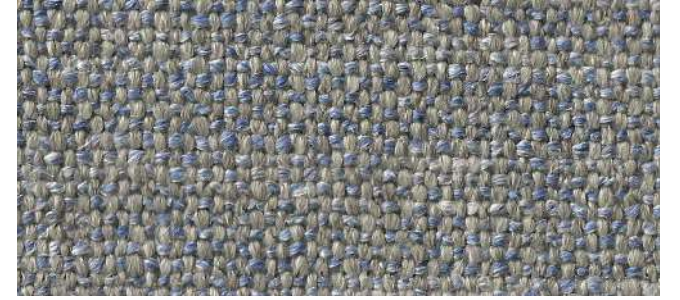
25

ART: RIKK5231
 CAT: SPECIAL
 COMP: 28%AC - 22%LI - 18%CO - 13%VI - 9%WO - 6%PL - 4%NY
 PESO: 870 gr/mtl

MARTINDALE: 80.000 giri
 ALTEZZA: 140 cm
 PILLING: 4



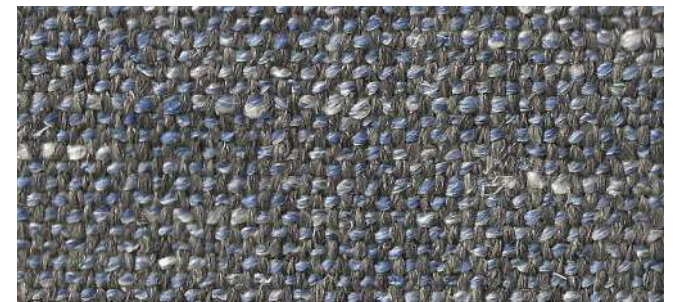
COL. 01



COL. 06



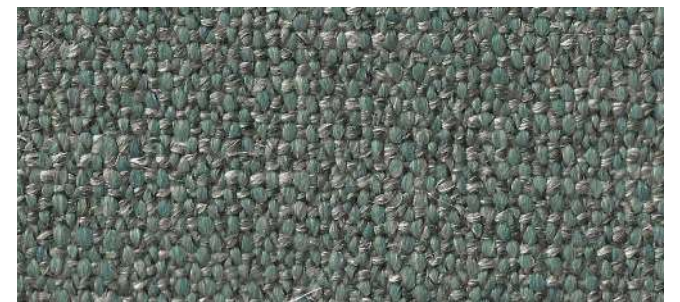
COL. 02



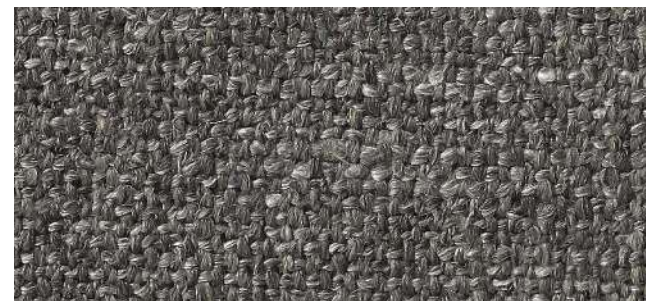
COL. 07



COL. 03



COL. 08



COL. 04



COL. 09



COL. 05



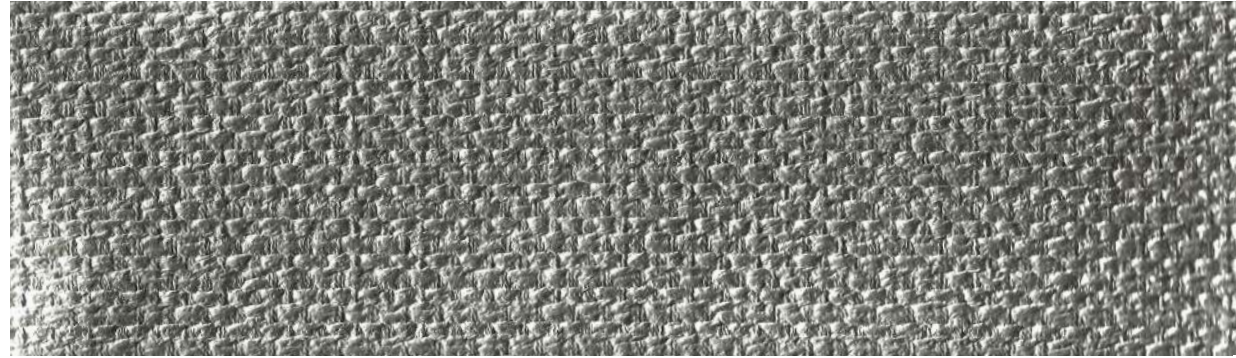
COL. 10

26

ART: SHINE
CAT: SPECIAL
COMP: 100% CO GRS ACCOPPIATO POLIURETANO
PESO: 960 gr/mtl

MARTINDALE: 20.000 giri
ALTEZZA: 140 cm
LAVAGGIO: TAMPONATURA CON SAPONE NEUTRO

UTILIZZARE SOLO PER SCOCHE E CUSCINI DECORATIVI



COL. 01



COL. 03



COL. 02



COL. 04

27

ART: LA THUILE
 CAT: EXTRA
 COMP: 61%PC - 18%CO - 7%JU - 6%PL - 4%NY - 4%VI
 PESO: 950 gr/mtl
 MARTINDALE: 30.000 giri
 ALTEZZA: 140 cm
 PILLING: 3/4



COL. 01



COL. 06



COL. 02



COL. 07



COL. 03



COL. 08



COL. 04



COL. 09



COL. 05



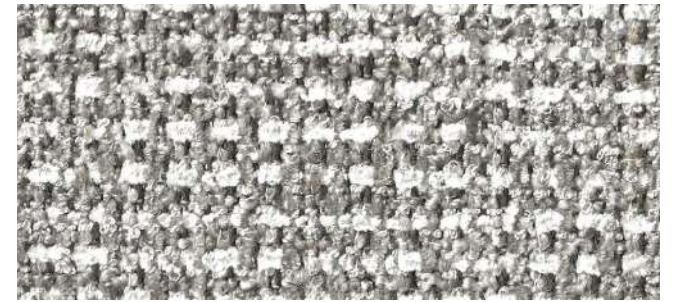
COL. 10

28

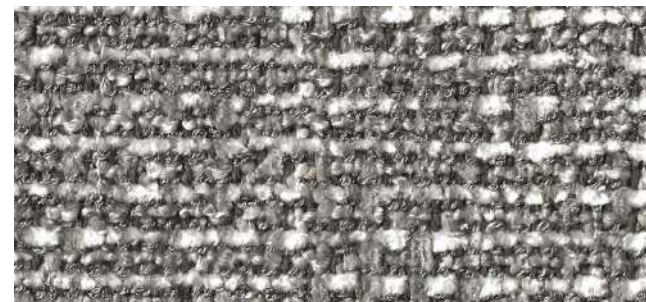
ART: THOMAS
 CAT: EXTRA
 COMP: 43%VI - 27%CO - 19%AC - 4%JU - 4%PL - 3%LI
 PESO: 850 gr/mtl
 MARTINDALE: 54.000 giri
 ALTEZZA: 140 cm
 PILLING: 4/5



COL. 01



COL. 02



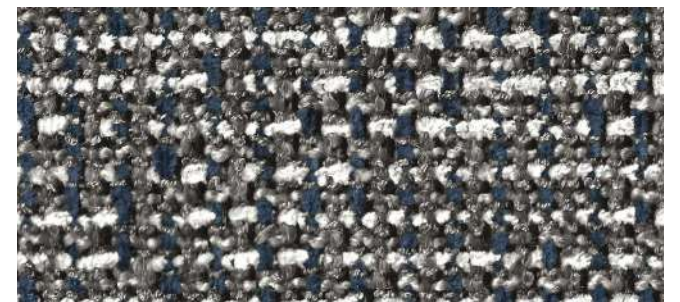
COL. 03



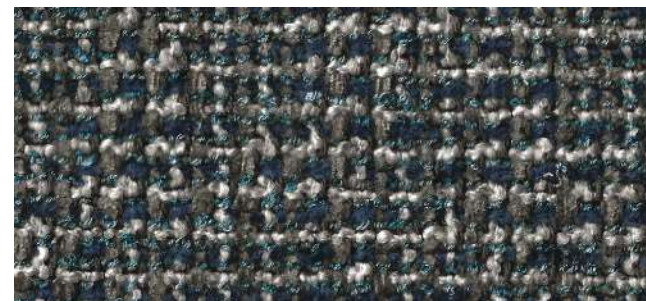
COL. 04



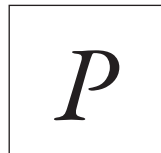
COL. 12



COL. 11



COL. 09



LA PELLE 4000

PROVENIENZA: europea

TIPO DI CONCIA: ai sali di cromo

SPESSORE: mm 1,1<->1,2

TIPO DI TINTURA: all'anilina, passante di botte

TIPOLOGIA: fiore corretto

RESISTENZA ALLA LUCE: > 4

SOLIDITA' ALLO SFREGAMENTO: a secco: 500 CICLI a umido: 80 CICLI

PULIZIA: Per l'eliminazione di macchie è opportuno utilizzare un panno umido con l'aggiunta, se necessario, di detersivi particolarmente delicati, come sapone neutro. Pulire evitando di strofinare la superficie: è preferibile tamponare la macchia dai bordi verso il centro. Non utilizzare mai prodotti abrasivi o aggressivi (solventi, smacchiatori), né vapore, né prodotti per la pulizia di calzature. Una volta terminata la pulizia, asciugare immediatamente la superficie trattata con un panno asciutto. Consigliamo comunque di testare sempre i prodotti per la pulizia in angoli nascosti, per verificare che non siano dannosi, prima di passare al trattamento di zone più esposte. Per una normale pulizia utilizzare un panno morbido e asciutto. Eventualmente consultare il produttore.

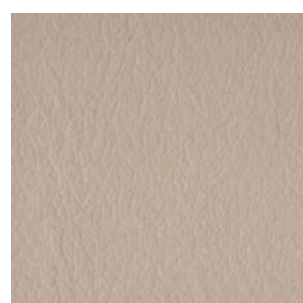
CLEANING: To remove stains it is advisable to use a damp cloth with the addition, if necessary, of particularly delicate detergents, such as neutral soap. Clean without rubbing the surface: it is preferable to dab the stain from the edges towards the center. Never use abrasive or aggressive products (solvents, stain removers), or steam, or products for cleaning shoes. Once cleaning is finished, immediately wipe the treated surface with a dry cloth. However, we recommend that you always test cleaning products in hidden corners, to verify that they are not harmful, before moving on to the treatment of more exposed areas. For normal cleaning use a soft, dry cloth. If necessary, consult the manufacturer.



P 4000



P 4004



P 4005



P 4006



P 4020



P 4021



P 4023



P 4024



P 4007



P 4009



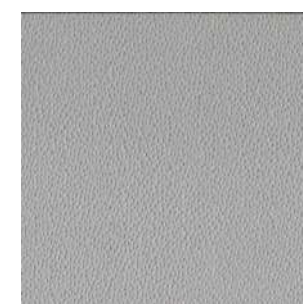
P 4010



P 4011



P 4904



P 4029



P 4030



P 4031



P 4050



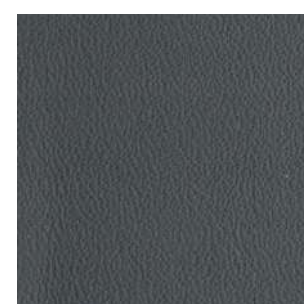
P 4013



P 4704



P 4015



P 4032



P 4033



P 4034



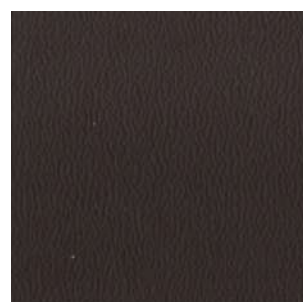
P 4035



P 4016



P 4017



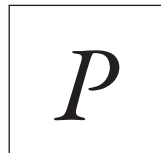
P 4018



P 4019



P 4080



LA PELLE 5000

PROVENIENZA: pelli bovine europee

TIPO DI CONCIA: ai sali di cromo

SPESSORE: mm 1,3<->1,4

TIPO DI TINTURA: all'anilina, passante di botte

TIPOLOGIA: fiore corretto

ASPETTO: Grana prestampata

TIPO DI RIFINIZIONE: Pigmentata

RESISTENZA ALLA LUCE: 72 ore valore ≥ 5

SOLIDITA' ALLO SFREGAMENTO: a secco: 500 CICLI a umido: 200 CICLI

PULIZIA: Per l'eliminazione di macchie è opportuno utilizzare un panno umido con l'aggiunta, se necessario, di detersivi particolarmente delicati, come sapone neutro. Pulire evitando di strofinare la superficie: è preferibile tamponare la macchia dai bordi verso il centro. Non utilizzare mai prodotti abrasivi o aggressivi (solventi, smacchiatori), né vapore, né prodotti per la pulizia di calzature. Una volta terminata la pulizia, asciugare immediatamente la superficie trattata con un panno asciutto. Consigliamo comunque di testare sempre i prodotti per la pulizia in angoli nascosti, per verificare che non siano dannosi, prima di passare al trattamento di zone più esposte. Per una normale pulizia utilizzare un panno morbido e asciutto. Eventualmente consultare il produttore.

CLEANING: To remove stains it is advisable to use a damp cloth with the addition, if necessary, of particularly delicate detergents, such as neutral soap. Clean without rubbing the surface: it is preferable to dab the stain from the edges towards the center. Never use abrasive or aggressive products (solvents, stain removers), or steam, or products for cleaning shoes. Once cleaning is finished, immediately wipe the treated surface with a dry cloth. However, we recommend that you always test cleaning products in hidden corners, to verify that they are not harmful, before moving on to the treatment of more exposed areas. For normal cleaning use a soft, dry cloth. If necessary, consult the manufacturer.



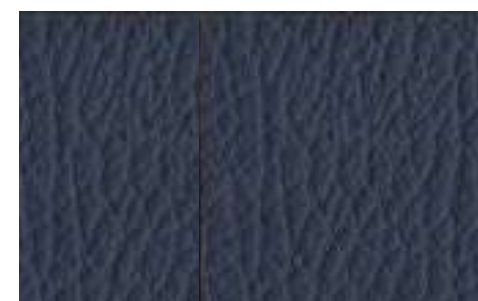
P 5001



P 5002



P 5003



P 5013



P 5014



P 5015



P 5004



P 5005



P 5006



P 5016



P 5017



P 5018



P 5007



P 5008



P 5009



P 5019



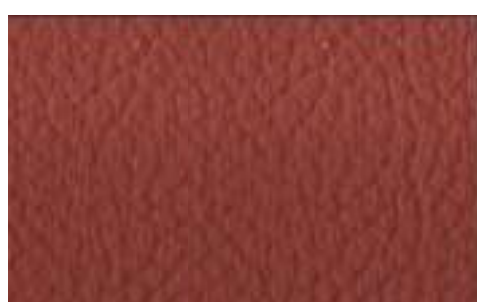
P 5020



P 5021



P 5010



P 5011



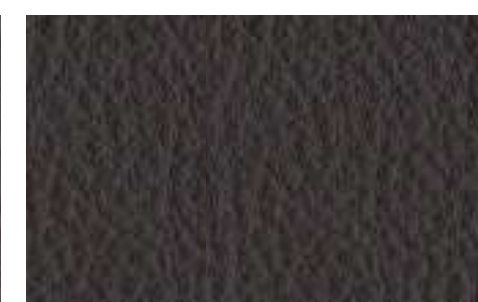
P 5012



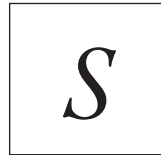
P 5022



P 5023



P 5024



SAVANA

PROVENIENZA: pelli bovine europee
 TIPO DI CONCIA: ai sali di cromo
 TIPO DI TINTURA: passante all'anilina
 SPESSORE: mm 1,3-1,5
 ASPETTO: semilucido
 TIPOLOGIA: fiore corretto
 RIFINIZIONE: anilina lucidata con effetto anticato e legg. Pull-up
 XENONTEST: 3/4
 Resistenza al fuoco: BS 5852 PART.1 (1979) POSITIVO
 NI/0: CIGARETTE TEST POSITIVO
 NI/1: MATCH TEST POSITIVO

PULIZIA: Per l'eliminazione di macchie è opportuno utilizzare un panno umido con l'aggiunta, se necessario, di detersivi particolarmente delicati, come sapone neutro. Pulire evitando di strofinare la superficie: è preferibile tamponare la macchia dai bordi verso il centro. Non utilizzare mai prodotti abrasivi o aggressivi (solventi, smacchiatori), né vapore, né prodotti per la pulizia di calzature. Una volta terminata la pulizia, asciugare immediatamente la superficie trattata con un panno asciutto. Consigliamo comunque di testare sempre i prodotti per la pulizia in angoli nascosti, per verificare che non siano dannosi, prima di passare al trattamento di zone più esposte. Per una normale pulizia utilizzare un panno morbido e asciutto. Eventualmente consultare il produttore.

CLEANING: To remove stains it is advisable to use a damp cloth with the addition, if necessary, of particularly delicate detergents, such as neutral soap. Clean without rubbing the surface: it is preferable to dab the stain from the edges towards the center. Never use abrasive or aggressive products (solvents, stain removers), or steam, or products for cleaning shoes. Once cleaning is finished, immediately wipe the treated surface with a dry cloth. However, we recommend that you always test cleaning products in hidden corners, to verify that they are not harmful, before moving on to the treatment of more exposed areas. For normal cleaning use a soft, dry cloth. If necessary, consult the manufacturer.



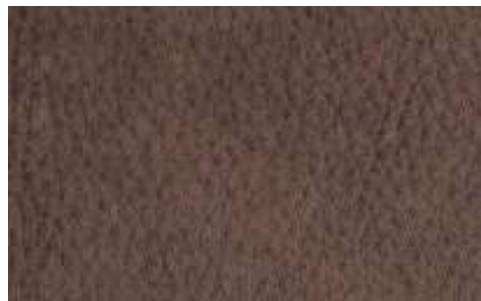
P 6001



P 6002



P 6003



P 6004



P 6005



P 6006



P 6007



P 6008



P 6009



P 6012



NABUK

PROVENIENZA: pelli bovine europee
 TIPO DI CONCIA: ai sali di cromo
 TIPO DI TINTURA: all'anilina, passante di botte
 SPESSORE: mm 1,4<->1,5
 ASPETTO: semilucido
 TIPOLOGIA: fiore nabuccato
 TRATTAMENTO: idrorepellente di botte
 SOLIDITA' ALLA LUCE: a 72 ORE 3-4 (ISO105-602)
 SOLIDITA' ALLO SFREGAMENTO: a secco: 50 CICLI (ISO 11640)
 a umido: 25 CICLI (ISO 11640)

PULIZIA: Si consiglia di spazzolare periodicamente questo tipo di pellame con una spazzola morbida. Esercitando questa azione in modo delicato, si ravviva il colore e la morbidezza. Per la pulizia di eventuali macchie, utilizzare solo gli appositi prodotti per la pulizia di pelli "Nabuk" che normalmente si trovano in commercio, avendo cura di eseguire attentamente le istruzioni riportate.

NON USARE ASSOLUTAMENTE solventi, smacchiatori o prodotti aggressivi, non usare mai il vapore. Prima di utilizzare il prodotto per la pulizia, sulle macchie da trattare, verificarne l'idoneità su parti nascoste, eventualmente consultare il produttore.

CLEANING: It is advisable to periodically brush this type of leather with a soft brush. By exerting this action in a delicate way, the color and softness are revived. To clean any stains, use only the special products for cleaning "Nubuck" leathers that are normally found on the market, taking care to carefully follow the instructions given.

ABSOLUTELY DO NOT USE solvents, stain removers or aggressive products, never use steam. Before using the cleaning product on the stains to be treated, check its suitability on hidden parts, if necessary consult the manufacturer.



COL. GHIACCIO



COL. AVORIO



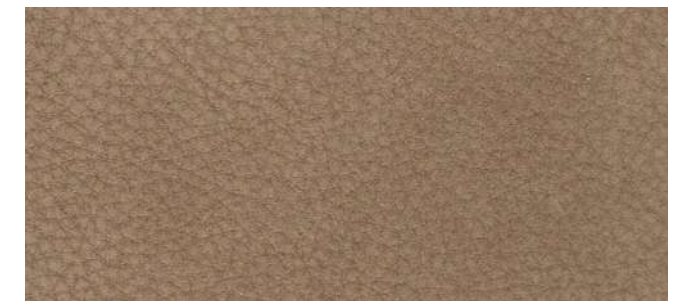
COL. PERLA



COL. CAMELLO



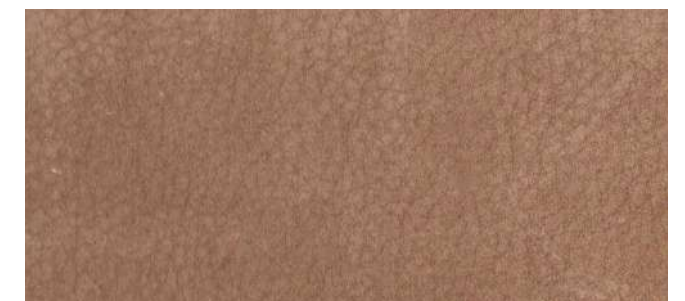
COL. CAMOSCIO



COL. NOCE



COL. GRIGIO



COL. NOCCIOLA



COL. RUGGINE



COL. TERRA



COL. BORDEAUX



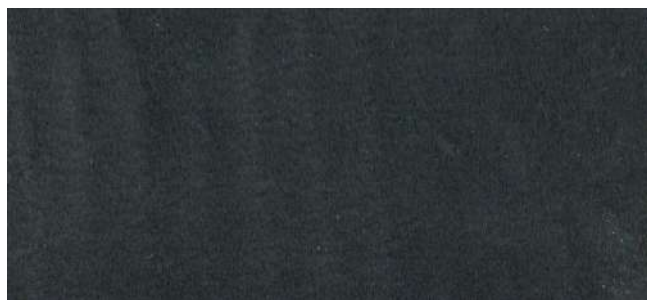
COL. VISONE



COL. BLU



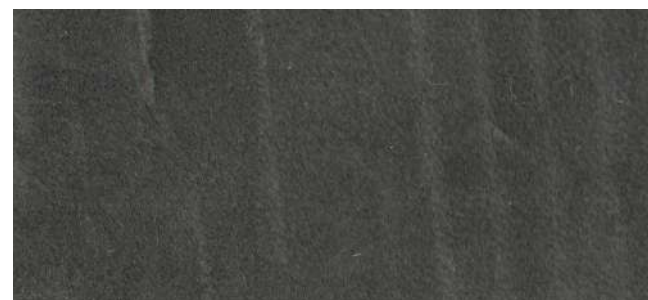
COL. CIOCCOLATO



COL. PETROLIO



COL. SMERALDO



COL. ANTRACITE



GRUPPO FOX

GRUPPO FOX s.r.l. - Via Degli Artigiani, 9
20853 Biassono (MB) Italy
Tel. +39 039.2495865
www.gruppofox.it - info@gruppofox.it

LAYOUT
Modulgrafica Forlivese SPA
Italy 2024

© GRUPPO FOX
tutti i diritti riservati

ella stampa su carta e nella visualizzazione a video la tonalità
dei colori dei vari materiali
non può essere riprodotta fedelmente.
Pertanto la resa deve considerarsi indicativa e non potrà
costituire motivo di contestazione del prodotto.

*When printed on paper or through a screen the hues and colors
of the various materials cannot be faithfully reproduced.
Therefore the output must be considered indicative and cannot
constitute a reason for contesting the product.*